

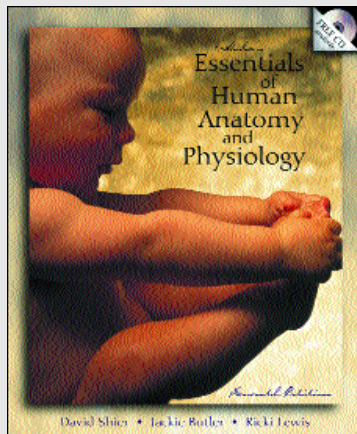
New to McGraw-Hill Higher Education

INTERACTIVE e-SOURCE

INTERACTIVE e-SOURCE is an exciting student resource that combines McGraw-Hill print, media, study, and web-based materials into one easy-to-use CD-ROM. This CD-ROM provides cutting-edge technology that accommodates all learning styles, and complements the printed text. The CD provides a truly non-linear experience by using video and art, as well as web-based and other course materials to help students organize their studies. Best of all, INTERACTIVE e-SOURCE is free for students who purchase new copies of select McGraw-Hill titles.

The following features illustrate, in depth, the benefits of INTERACTIVE e-SOURCE.

- Full textbook and study guide HTML files are interlinked. This includes all narrative, art and photos, PLUS expertly crafted animations and video.
- Targeted web links encourage focused web research.
- A powerful Search Engine enables students to improve studying by locating targeted content quickly and easily.
- An annotation function allows students to enhance their studying by personalizing e-SOURCE material with their own specific notes or comments.
- By using the highlighting function (and their choice of highlight color), students can quickly identify important concepts as they review their materials.
- The Media Gallery organizes all non-text content on the CD and presents it as a clear menu. This allows students to perform non-linear searches as well as retrieval of any media content relevant to their specific studying needs.
- A Customized Binder function allows students to extract important information and customize their materials for future reference.
- A special Read feature converts written text to audio, enabling students to listen to important concepts and hear the proper pronunciations of key terms.

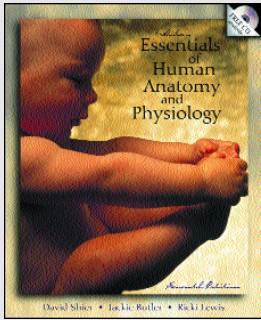


Hole's Essentials of Human Anatomy & Physiology, Seventh Edition

by David Shier, Jacki Butler, and Ricki Lewis
2000 • 0-07-241952-0 • hardcover
2000 • 0-07-241842-7 • softcover
www.mhhe.com/biosci/ap/holeessentials/



Contact your McGraw-Hill sales representative for more information or visit www.mhhe.com.



INTERACTIVE e-SOURCE

Hole's Essentials of Human Anatomy & Physiology,
Seventh Edition

by David Shier, Jacki Butler, and Ricki Lewis
2000 • 0-07-241952-0 • hardcover
2000 • 0-07-241842-7 • softcover

www.mhhe.com/biosci/ap/holeessentials/

TEXTBOOKS

Textbook • Table of Contents

Unit 1 Levels of Organization

- 1 Introduction to Human Anatomy and Physiology
- 2 Chemical Basis of Life
- 3 Cells
- 4 Cellular Metabolism
- 5 Tissues
- 6 Skin and the Integumentary System

Unit 2 Support and Movement

- 7 Skeletal System
- 8 Muscular System

Unit 3 Integration and Coordination

- 9 Nervous System
- 10 Somatic and Special Senses
- 11 Endocrine System

Unit 4 Transport

- 12 Blood
- 13 Cardiovascular System
- 14 Lymphatic System and Immunity

Unit 5 Absorption and Excretion

- 15 Digestion and Nutrition
- 16 Respiratory System
- 17 Urinary System
- 18 Water, Electrolyte, and Acid-Base Balance

Unit 6 The Human Life Cycle

- 19 Reproductive Systems
- 20 Pregnancy, Growth, and Development

ANIMATIONS

List of Animations

Unit 1 Levels of Organization

- ch 1 Proximal / Distal
- ch 2 Atomic Structure
- ch 3 Mitosis
- ch 4 DNA Structure
- ch 6 Fever

Unit 2 Support and Movement

- ch 8 Actin-Myosin Crossbridges

Unit 3 Integration and Coordination

- ch 9 Muscle Contraction Action Potentials
- ch 10 Hearing
- ch 11 Parathyroid Hormone

Unit 4 Transport

- ch 12 ABO Blood Types
- ch 13 Cardiac Cycle
- ch 14 T-Helper Cell Function

Unit 5 Absorption and Excretion

- ch 15 Digestion and Nutrition
- ch 16 Breathing
- ch 17 Kidney Function

Unit 6 The Human Life Cycle

- ch 19 Reproductive Systems

System Requirements

PC

- Pentium CPU
- Windows 95 or 98
- 32 MB RAM
- 100 MB free hard disk space
- 800 x 600 monitor resolution
- 16 bit high-color
- 12X CD-ROM drive (recommended) or DVD-ROM drive
- 28.8K modem to connect to the VersabookStore and other online components.

Macintosh

- Macintosh Power PC - Mac OS 8.1 or later version
- 32 MB RAM - 220 MB free hard disk space
- 800 x 600 monitor resolution
- Color depth: Thousands or better
- 6X CD-ROM drive
- 28.8K modem or faster to connect to register



Contact your McGraw-Hill sales representative for more information or visit www.mhhe.com.